



Alpha Environmental Services, Inc.
Indoor Air Quality Screening Report – Extended Test Time

Friday, December 27, 2024

Scio School District and Harley Stephenson
stephenh@sciok12.org

Re: Summary of Indoor Air Quality Measurement at 38875 NW 1st Ave, Scio, OR 97374
Project No. 24-65726

Dear Scio School District:

Alpha Environmental Services, Inc. performed an indoor air quality test with a 72-hour sampling duration at the above-referenced address that began on 12/23/2024 and ended on 12/26/2024. The testing was conducted in the building C hallway using AQ Test System Serial # 33294. These test results represent the conditions that existed with respect to weather and operating conditions in the tested area during the period tested.

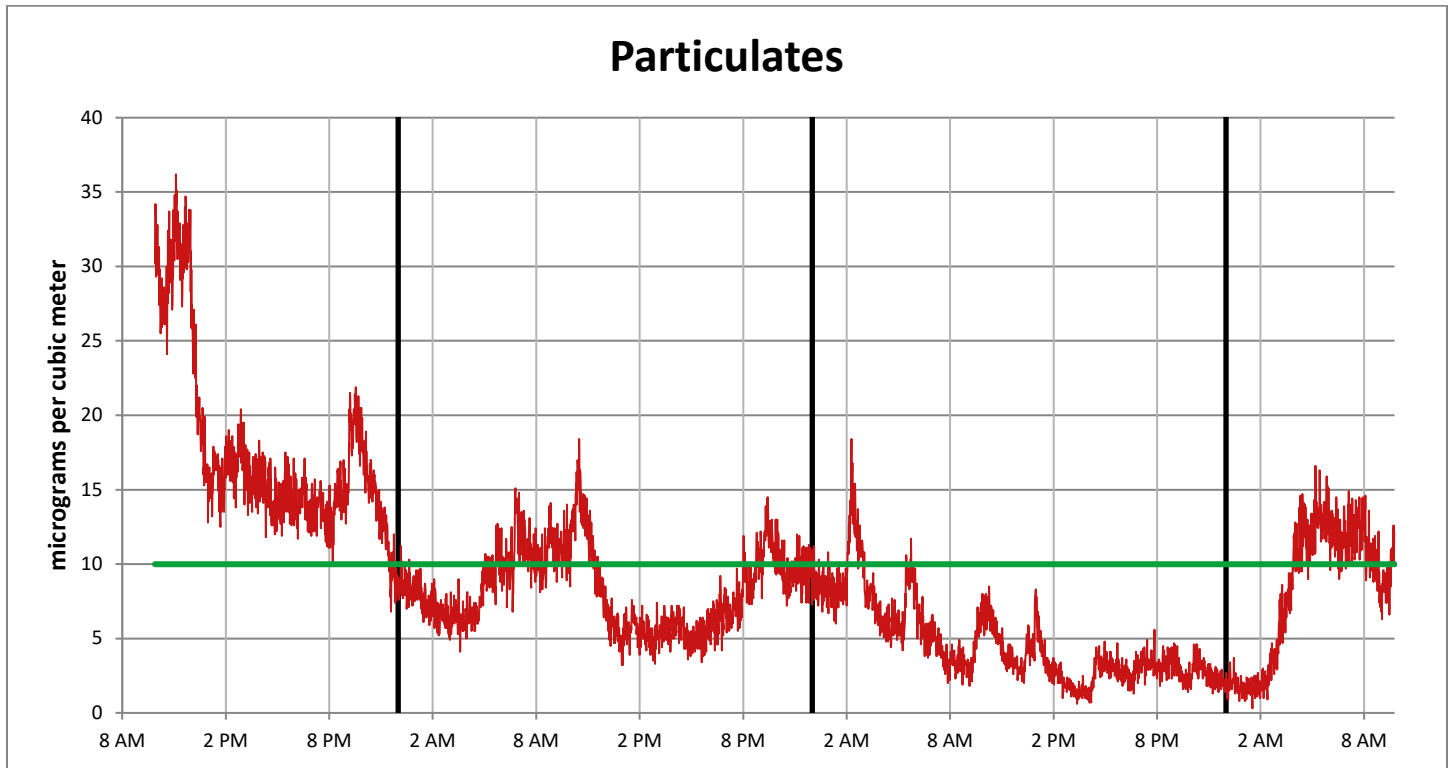
Results of the indoor air quality testing are included in the table below:

| Measured Entity | Value (Average) | Remarks |
|---|---|---|
| Particulates (0.3 – 10 µm) | Overall: 9 µg/m ³ Highest Daily: 18 µg/m ³ Highest Hourly: 32 µg/m ³ | No action necessary. Particle levels were below 10 µg/m ³ . ^a |
| Total Volatile Organic Compounds (VOCs) | Overall: 239 µg/m ³ Highest Daily: 251 µg/m ³ Highest Hourly: 355 µg/m ³ | No action necessary. TVOC levels were below 500 µg/cm ³ . ^b |
| Carbon Dioxide (CO ₂) | Overall: 549 ppm Highest Daily: 557 ppm Highest Hourly: 571 ppm | No action necessary. Carbon dioxide levels were below 750 ppm. ^c |
| Temperature | Overall: 66 °F Lowest Daily: 66 °F Lowest Hourly: 61 °F | No action necessary. Temperature was between 60° F and 80° F. ^d |
| Relative Humidity | Overall: 46 % Lowest Daily: 48 % Lowest Hourly: 52 % | No action necessary. Relative humidity was between 30% and 60%. ^e |
| Formaldehyde | Overall: 12 µg/m ³ Highest Daily: 15 µg/m ³ Highest Hourly: 50 µg/m ³ | No action necessary. Formaldehyde levels were below 50 µg/m ³ . |
| Carbon Monoxide (CO) | Overall: .75 ppm Highest Daily: .95 ppm Highest Hourly: .95 ppm | No action necessary. Carbon monoxide levels were below 6 ppm. ^f |

If you have any questions regarding this letter or if we can be of further assistance, please contact us at (503) 292-5346.

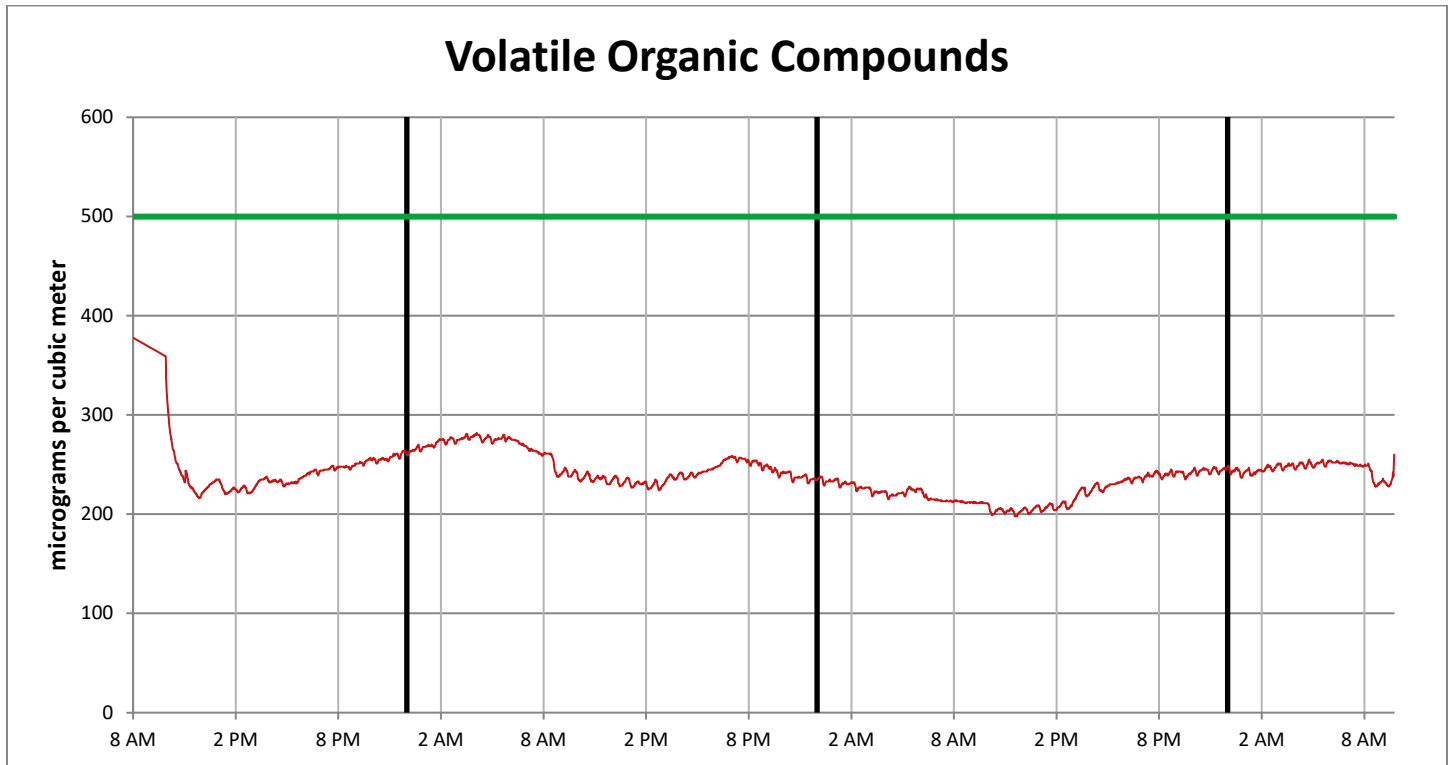
PARTICULATES

| Measured Entity | Value (Average) | Remarks |
|-------------------------------|---|--|
| Particulates (0.3 – 10 µm) | Overall: 9 µg/m ³ Highest Daily: 18 µg/m ³ Highest Hourly: 32 µg/m ³ | No action necessary. Particulate levels were below 10 µg/m ³ . ^a |



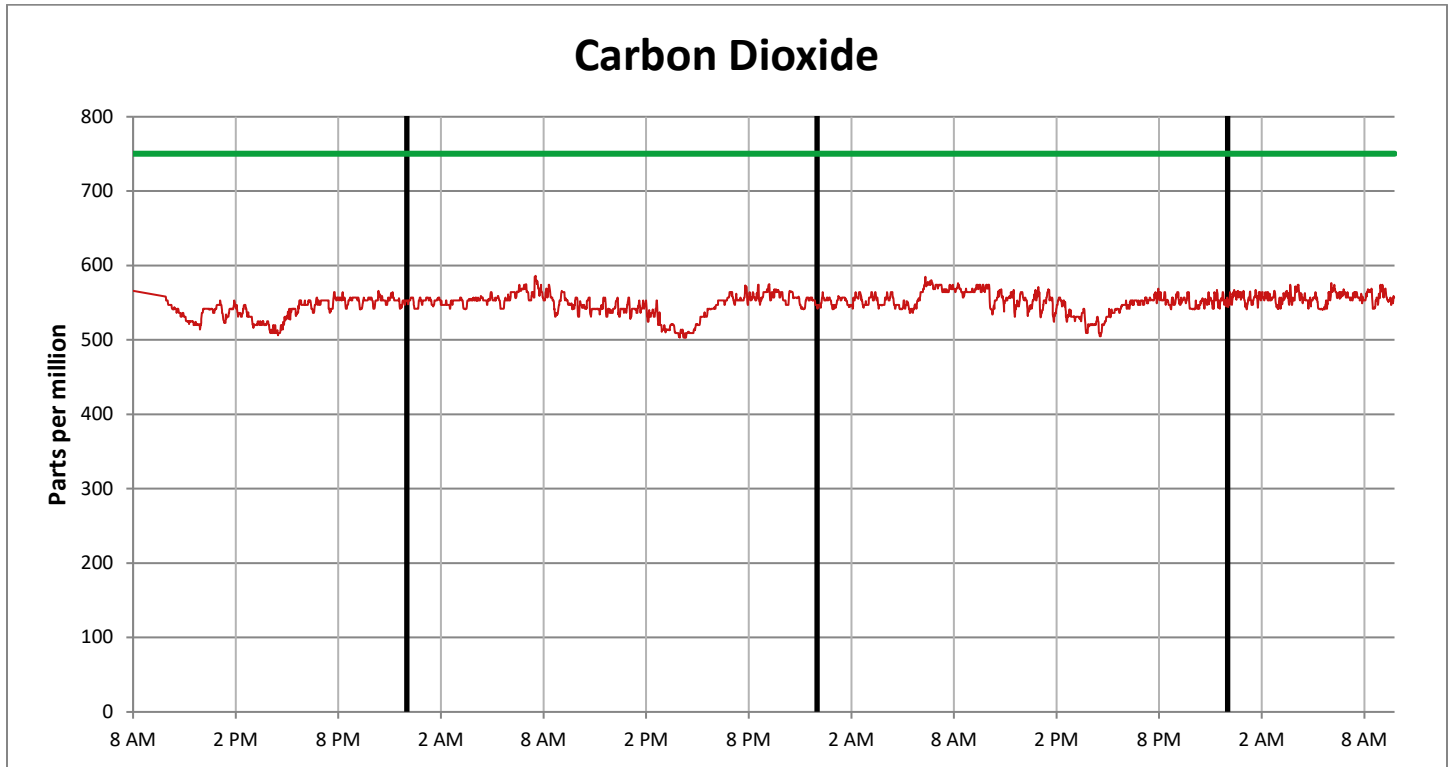
TOTAL VOLATILE ORGANIC COMPOUNDS

| Measured Entity | Value (Average) | Remarks |
|--|--|--|
| Total Volatile Organic Compounds (TVOCs) | Overall: 239 $\mu\text{g}/\text{m}^3$ Highest Daily: 251 $\mu\text{g}/\text{m}^3$ Highest Hourly: 355 $\mu\text{g}/\text{m}^3$ | No action necessary. TVOC levels were below 500 $\mu\text{g}/\text{m}^3$. ^b |



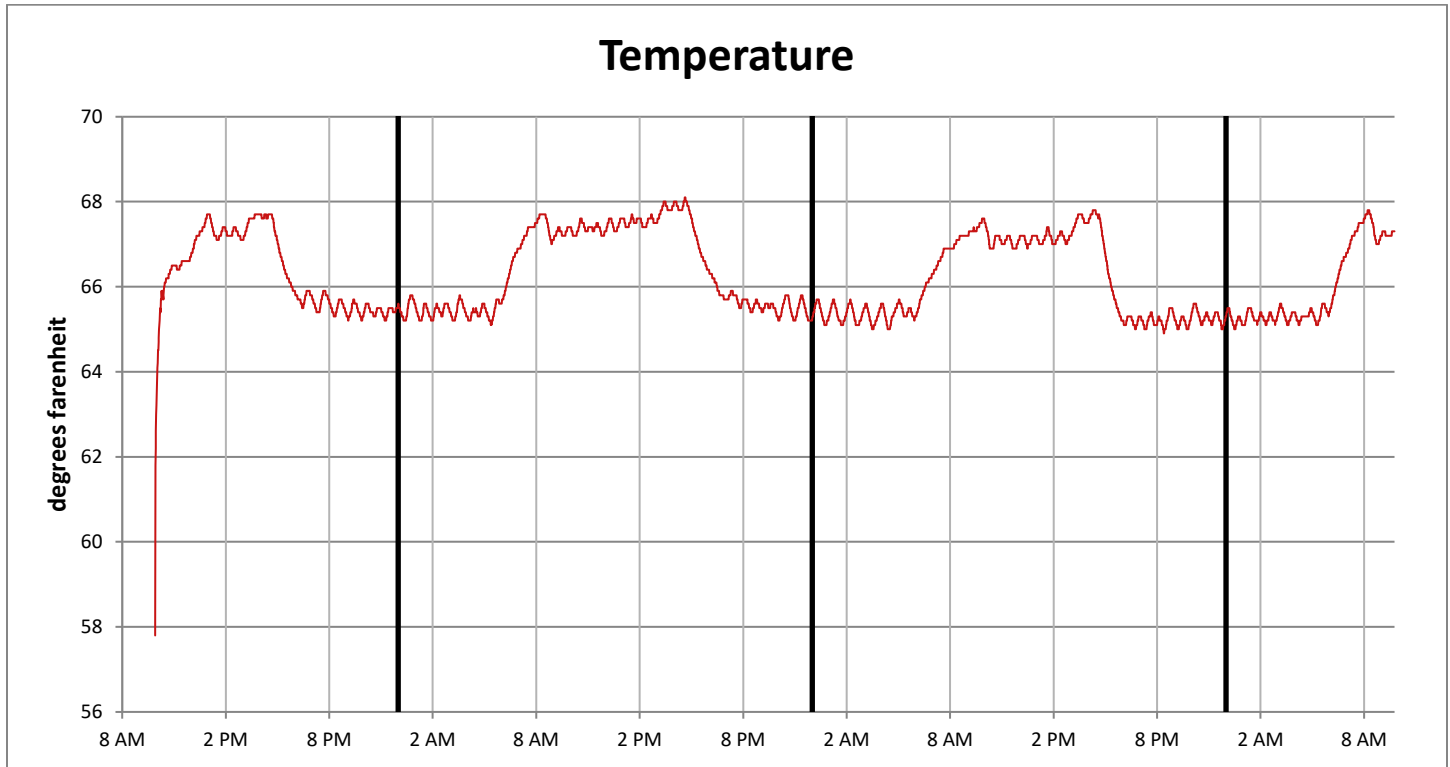
CARBON DIOXIDE

| Measured Entity | Value (Average) | Remarks |
|-----------------|---|---|
| CO ₂ | Overall: 549 ppm Highest Daily: 557 ppm Highest Hourly: 571 ppm | No action necessary. Carbon dioxide levels were below 750 ppm. c |



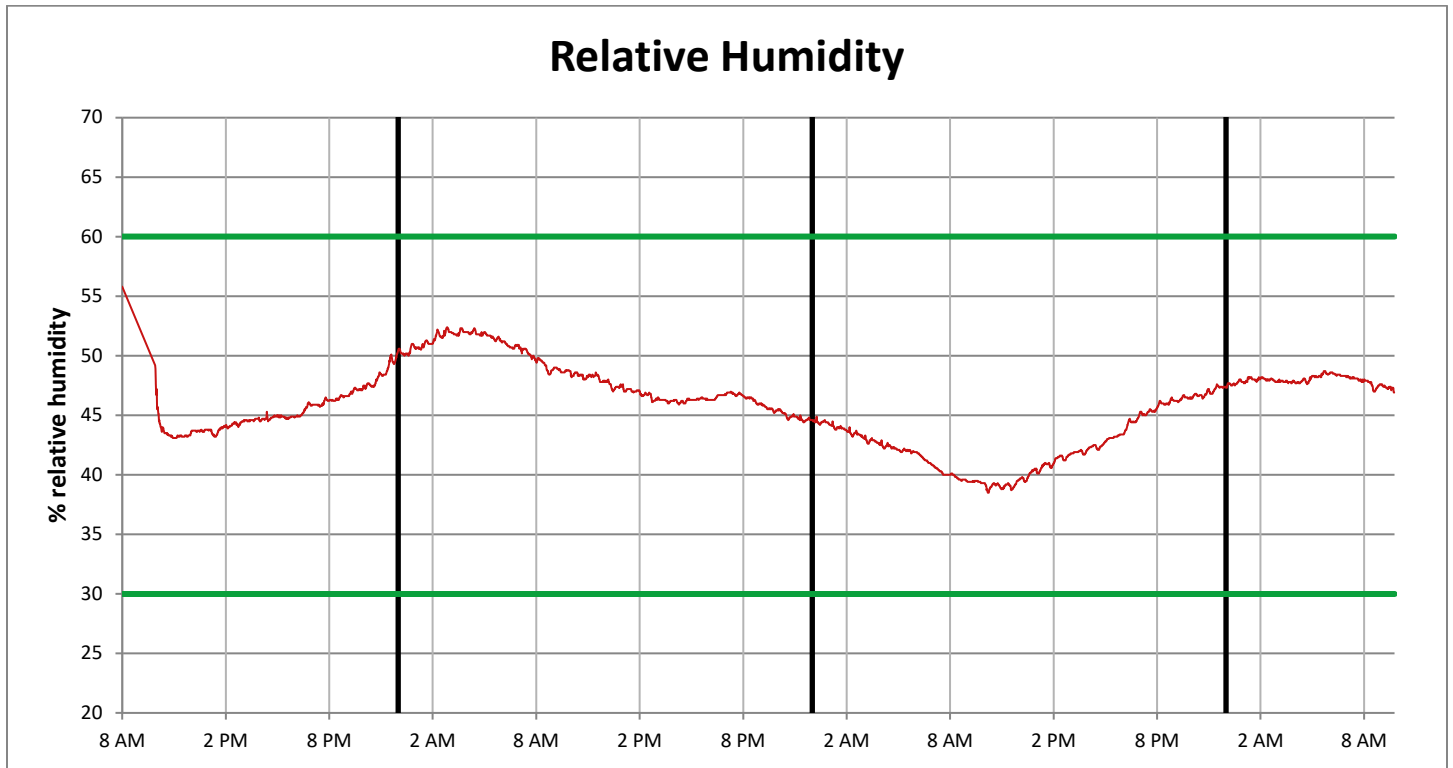
TEMPERATURE

| Measured Entity | Value (Average) | Remarks |
|-----------------|--|--|
| Temperature | Overall: 66 ° F Lowest Daily: 66 ° F Lowest Hourly: 61 ° F | No action necessary. Temperature was between 60° F and 80° F. d |



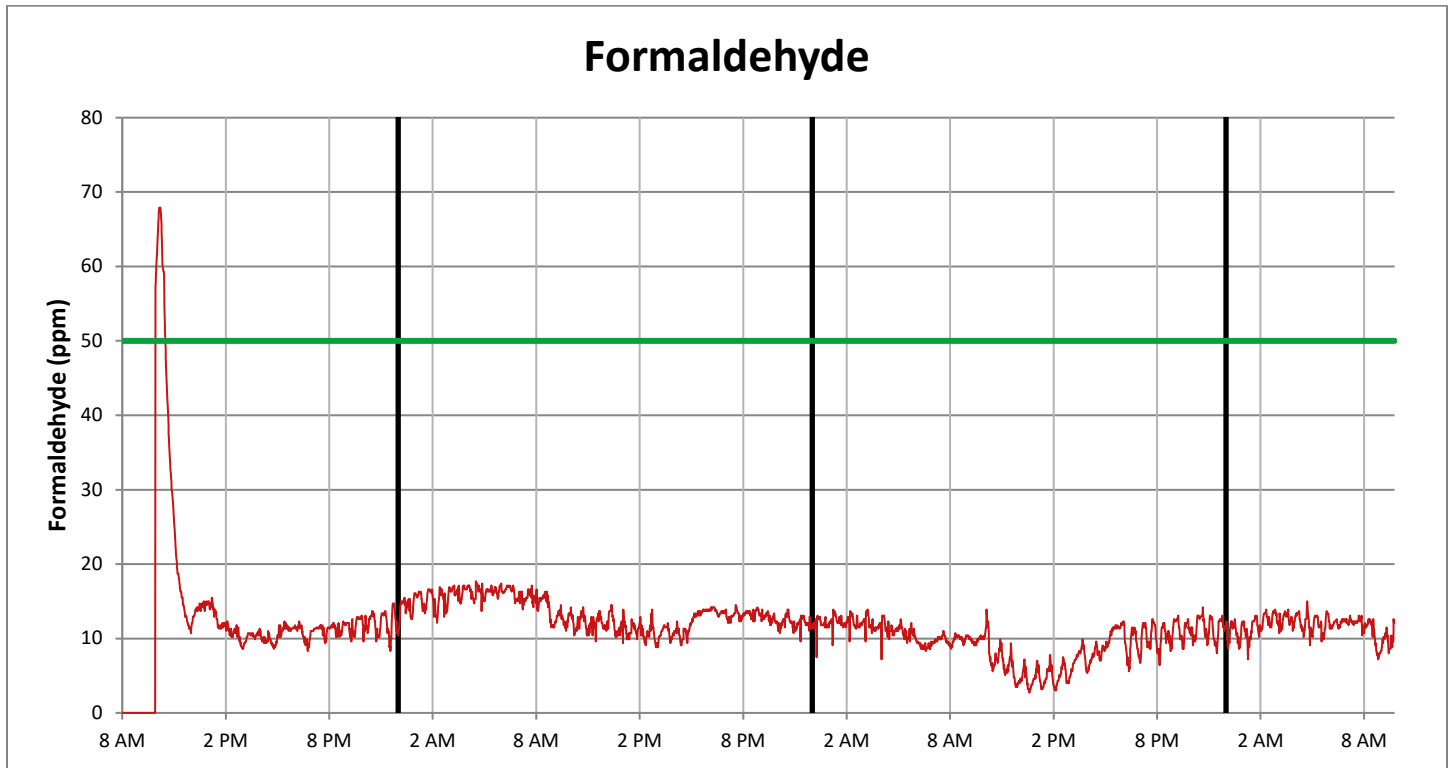
RELATIVE HUMIDITY

| Measured Entity | Value (Average) | Remarks |
|-------------------|--|--|
| Relative Humidity | Overall: 46 % Lowest Daily: 48 % Lowest Hourly: 52 % | No action necessary. Relative humidity was between 30% and 60%. ^e |



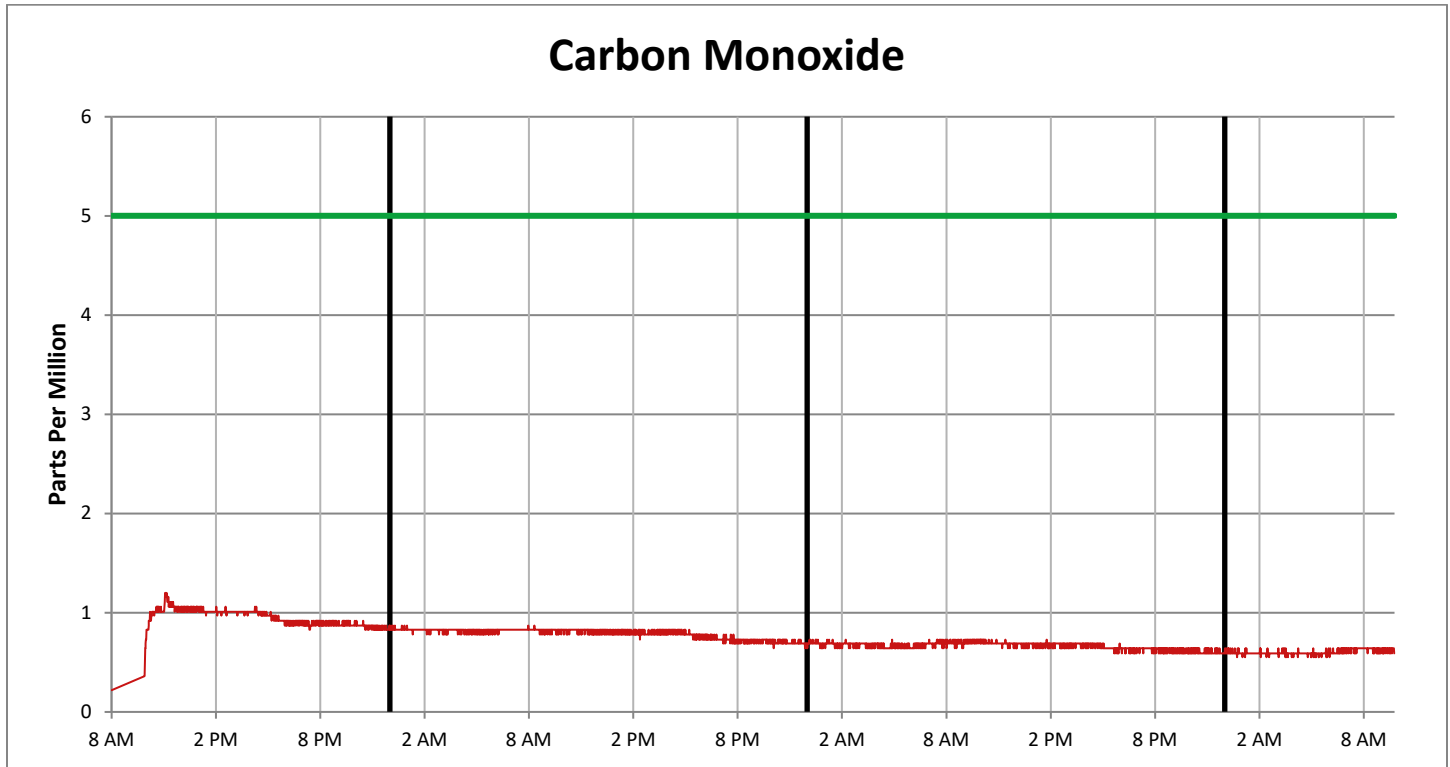
FORMALDEHYDE

| Measured Entity | Value (Average) | Remarks |
|-----------------|---|--|
| Formaldehyde | Overall: 12 $\mu\text{g}/\text{m}^3$ Highest Daily: 15 $\mu\text{g}/\text{m}^3$ Highest Hourly: 50 $\mu\text{g}/\text{m}^3$ | No action necessary. Formaldehyde levels are below 50 $\mu\text{g}/\text{m}^3$. |



CARBON MONOXIDE

| Measured Entity | Value (Average) | Remarks |
|-----------------|---|--|
| Carbon Monoxide | Overall: .75 ppm Highest Daily: .95 ppm Highest Hourly: .95 ppm | No action necessary. Carbon monoxide levels were below 6 ppm. ^f |



^a American Lung Association, Environmental Protection Agency (EPA); Indoor Air Quality Association.
^b European Union (EU); Leadership in Energy & Environmental Design (LEED); Environmental Protection Agency (EPA).
^c EPA, Minnesota Dept. of Health
^d Alpha Environmental Guidelines
^e American Society of Heating, Refrigerating and Air-conditioning Engineers, Inc. (ASHRAE 62-2001)
^f US Environmental Protection Agency; World Health Organization (WHO); Indoor Air Quality Association (IAQA)

