



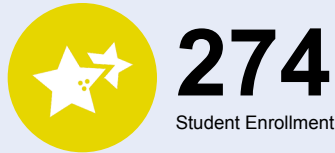
# OREGON AT-A-GLANCE SCHOOL PROFILE

## Centennial Elementary School

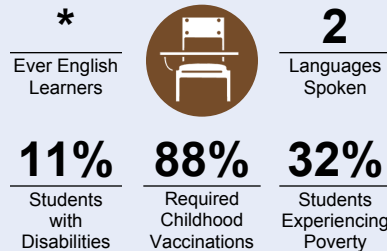
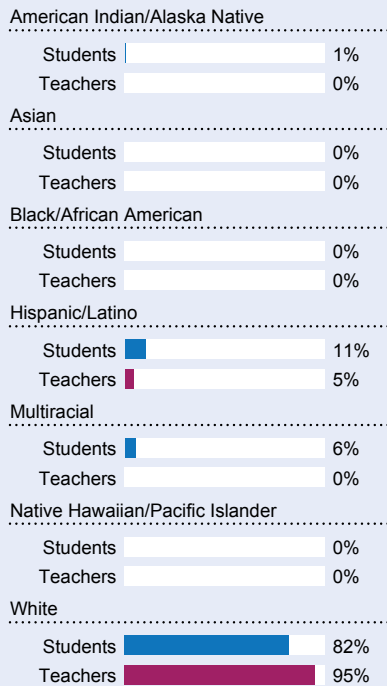


PRINCIPAL: Kimberlee Roth | GRADES: K-5 | 38875 NW First Ave, Scio 97374 | 503-394-3265

### Students We Serve



### DEMOGRAPHICS

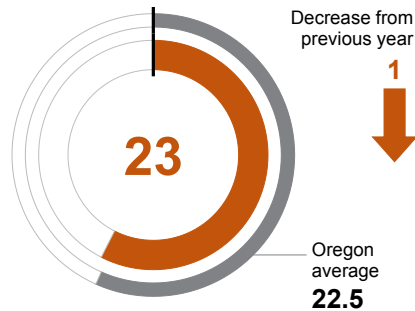


\*<10 students or data unavailable

### School Environment

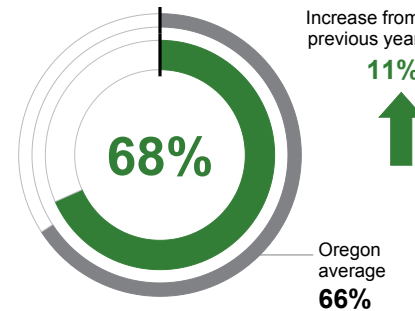
#### CLASS SIZE

Median class size.



#### REGULAR ATTENDERS

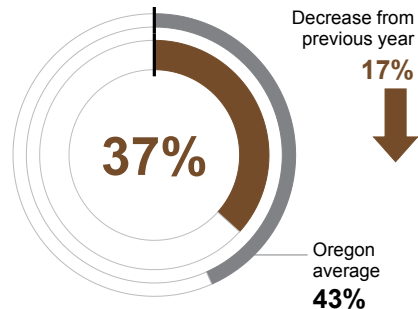
Students who attended more than 90% of their enrolled school days.



### Academic Success

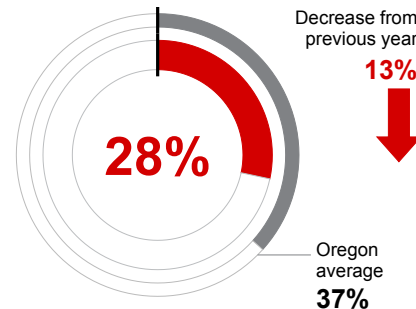
#### ENGLISH LANGUAGE ARTS

Students meeting state grade-level expectations.



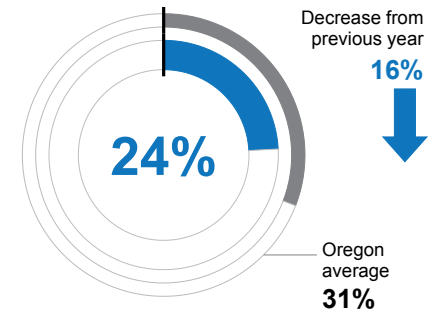
#### MATHEMATICS

Students meeting state grade-level expectations.



#### SCIENCE

Students meeting state grade-level expectations.



### School Goals

Our goals focus on Social, Emotional, and Academic Skills. Centennial staff work tirelessly to improve student performance through strong instructional practices. We have supports for low-performing readers and we have in-class supports using the curriculum. Teachers utilize the GLAD style of teaching, which has improved our performance in science and social studies while also supporting kids vocabulary. Our weekly professional learning times are spent focusing on writing, attendance, behavior, and math.

### State Goals

The Oregon Department of Education is collaborating with school districts and communities across the state to achieve a 90% on-time graduation rate by 2027. Grounded in the pillars of Academic Excellence, Belonging and Wellness, and Reimagined Accountability, ODE prioritizes evidence-based practices to boost early literacy, attendance, and student engagement. We are committed to closing opportunity and achievement gaps for marginalized students and securing long-term success for all of Oregon's learners by investing in culturally responsive practices, fostering inclusive environments and always driving for continuous improvement.

### Safe & Welcoming Environment

Our school strives to ensure all students and their families feel welcome. Communication is a priority as we partner with families. Our teachers are responsive to calls and email, and our office sends home weekly newsletters and fliers. Each year we organize fun activities that involve the community: K-12 Talent Show, K-2 Winter Concert, 3-5 Spring Concert, Ghost Walk, Grandparents Day, and more. We continually welcome ongoing feedback about how we can make our school more inclusive for all.



# OREGON AT-A-GLANCE SCHOOL PROFILE CONTINUED

## Centennial Elementary School



2023-24

### Outcomes

#### Our Staff (rounded FTE)



**15**

Teachers



**10**

Educational assistants



**1**

Counselors/  
Psychologists/  
Social Workers



**83%**

Average teacher retention rate over the past three years



**56%**

% of licensed teachers with more than 3 years of experience



**Yes**

Same principal in the last 3 years

#### REGULAR ATTENDERS

American Indian/Alaska Native	<10 students or data unavailable
Asian	<10 students or data unavailable
Black/African American	<10 students or data unavailable
Hispanic/Latino	77%
Multiracial	82%
Native Hawaiian/Pacific Islander	<10 students or data unavailable
White	66%
Students Experiencing Poverty	57%
Ever English Learner	<10 students or data unavailable
Students with Disabilities	55%
Migrant	<10 students or data unavailable
Homeless	<10 students or data unavailable
Students in Foster Care	<10 students or data unavailable
Military Connected	<10 students or data unavailable
Talented and Gifted	<10 students or data unavailable
Female	68%
Male	68%
Non-Binary	<10 students or data unavailable

#### ENGLISH LANGUAGE ARTS

<10 students or data unavailable
<10 students or data unavailable
<10 students or data unavailable
36%
<10 students or data unavailable
<10 students or data unavailable
37%
28%
<10 students or data unavailable
6%
<10 students or data unavailable
<10 students or data unavailable
<10 students or data unavailable
<10 students or data unavailable
<10 students or data unavailable
<10 students or data unavailable
36%
38%
<10 students or data unavailable

#### MATHEMATICS

<10 students or data unavailable
<10 students or data unavailable
<10 students or data unavailable
14%
<10 students or data unavailable
<10 students or data unavailable
31%
18%
<10 students or data unavailable
7%
<10 students or data unavailable
<10 students or data unavailable
<10 students or data unavailable
<10 students or data unavailable
<10 students or data unavailable
27%
29%
<10 students or data unavailable

### About Our School

#### BULLYING, HARASSMENT, AND SAFETY POLICIES

To ensure a safe and secure learning environment for all of our students, our school implemented STOP-WALK-TALK. This program works with students, school staff, and parents to give students tools to solve their problems and ask for help and seek support.

We host yearly training and discussion opportunities to help students and staff recognize bullying and harassment and provide strategies for intervention. Our Behavior Support Team encourages all of our students to speak up when they see bullying.

Our school counselor provides lessons and opportunities to guide our students in school safety and appropriate social interactions.

#### EXTRACURRICULAR ACTIVITIES

Many of our students play sports and participate in the community. At school, we wholeheartedly support those efforts.

#### PARENT ENGAGEMENT

Centennial parents are very involved. Over 1,000 hours per year are logged for volunteer support in and around the classroom. Volunteers assist teachers and students in the learning process, as well as providing support in preparation when possible. All parents are provided a list of guidelines for being an effective volunteer, and they make a huge difference in the life of our school. Our Parent Club also works closely with classroom teachers and the administration to enrich classrooms and improve our school culture. Their monthly meetings are well-attended, and their annual fundraising event goes toward improving our children's education.

#### COMMUNITY ENGAGEMENT

Each classroom is involved in multiple field trips and community programs that enrich students' education. In addition, we have annual fundraisers for charity and a food drive through our fire station that supports families in need. Students are highly motivated to support our community, and they are engaged in the life of our town, as well as our school.